

FRPC Traffic Survey October 2019

From 30 September to 14 October 2019 traffic on the A355 through Farnham Common was measured on Beaconsfield Rd, about 80 metres north of the signal-controlled pedestrian crossing at Farnham Common Infants School.

Northbound and Southbound traffic were measured separately. The numbers and types of vehicles in each direction were broadly similar, half in each direction at all hours, but southbound speeds were generally lower, see third page.

Peak hours for vehicle numbers are during the rush-hours on weekdays and around midday on Saturdays and Sundays.

Results of speed measurements (all vehicles, Northbound and Southbound)

During the week, during the rush-hours and at the beginning and end of the school day, most vehicles are travelling at less than 30mph (green bars) and many at less than 25mph (blue bars). Speeds are generally higher at the weekend.

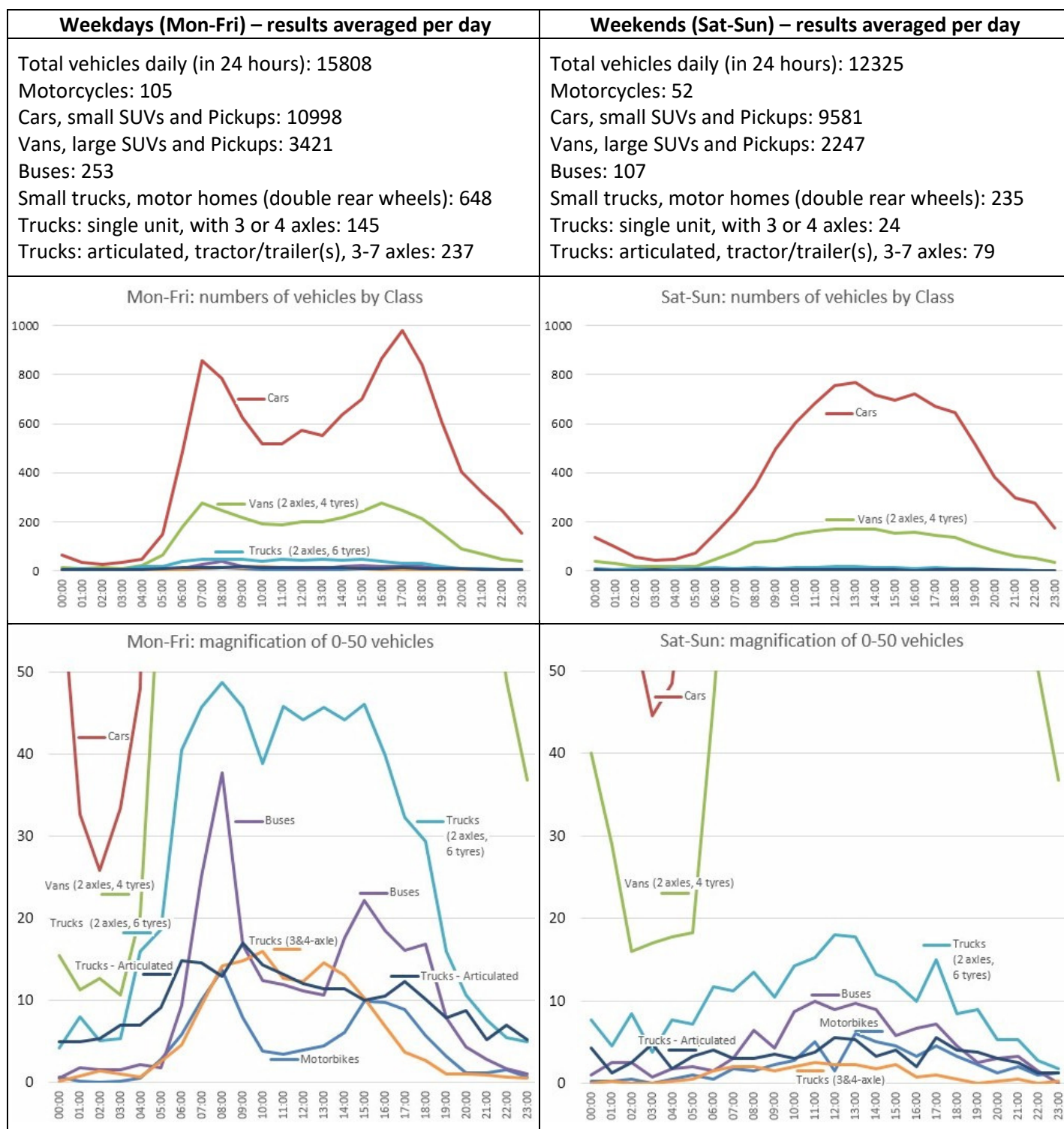
Weekdays (Mon-Fri) – results averaged per day	Weekends (Sat-Sun) – results averaged per day
Total vehicles daily (in 24 hours): 15808 Total daytime (12 hours: 7am-7pm): 12237 Total night time (12 hours): 3572	Total vehicles daily (in 24 hours): 12325 Total daytime (12 hours: 7am-7pm): 9405 Total night time (12 hours): 2920
On weekdays the busiest times are 7am-9am and 4pm-7pm, when 72% of vehicles travel under 30mph. Traffic volumes and/or the school crossing cause some slower vehicles (speed < 25mph) within these hours. At night, from midnight until 6am (left end of graph) 73% exceed 30mph and 3.0% exceed 50mph.	At weekends, the busiest time is noon-2pm, when only 50% of vehicles travel under 30mph. Most vehicles (81%) at these busiest weekend times are travelling between 25 and 35 mph. From midnight (left end of graph) 63% exceed 30mph until 10am; 2.3% exceed 50mph until 6am.
Overall Mon-Fri, 66% of vehicles in the day and 51% in the night travel at less than 30mph. Overall, 72% of vehicles travel between 25 and 35 mph. 9% travel more than 35mph.	Overall at the weekend, 49% of vehicles in the day and 48% in the night travel at less than 30mph. Overall, 79% of vehicles travel between 25 and 35 mph. 13% travel more than 35mph.

Results of class (vehicle type) measurements

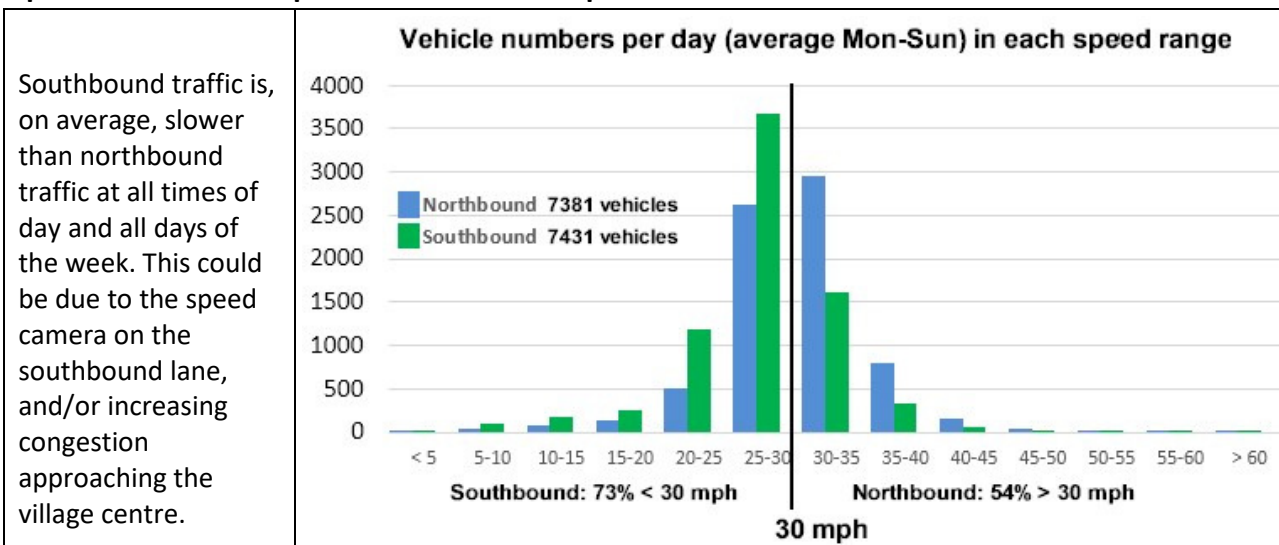
The majority of vehicles are passenger cars and other similar-sized vehicles: 70% during the week and 78% at weekends.

The accuracy (or uncertainty) in assigning vehicle class is unknown, for example in distinguishing between buses and 2-axle trucks/motor homes.

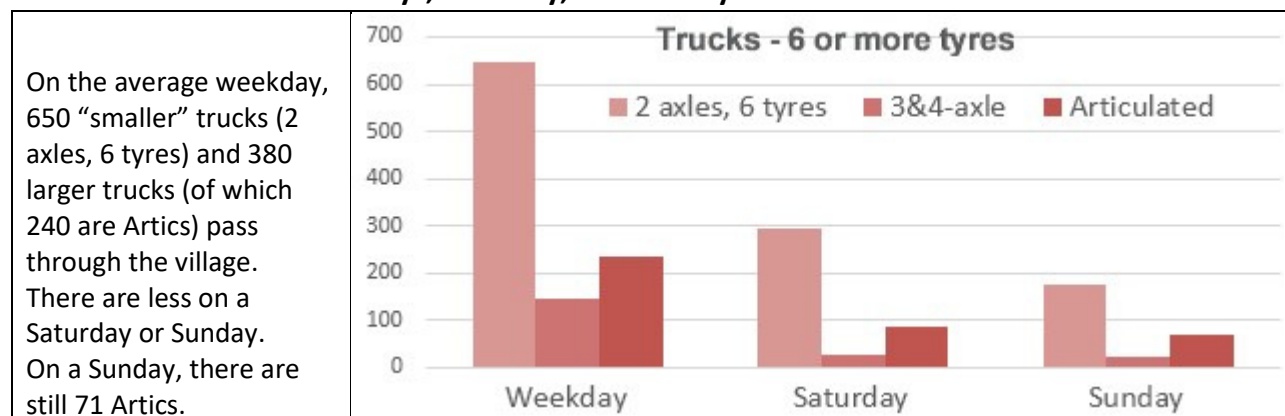
Larger trucks (3 or more axles) make up 2.4% of all traffic during the week and less than 1% at weekends. In peak weekday hours, between 8am and midday, there is a large truck every two minutes travelling either north or south: 40% are Single Unit, 60% are Single Trailer. Multi-trailer trucks average only 2 per day. Despite being only 2.4% of total traffic, larger trucks are more noticeable due to size, noise, and emissions.



Speed: Northbound speed vs Southbound speed

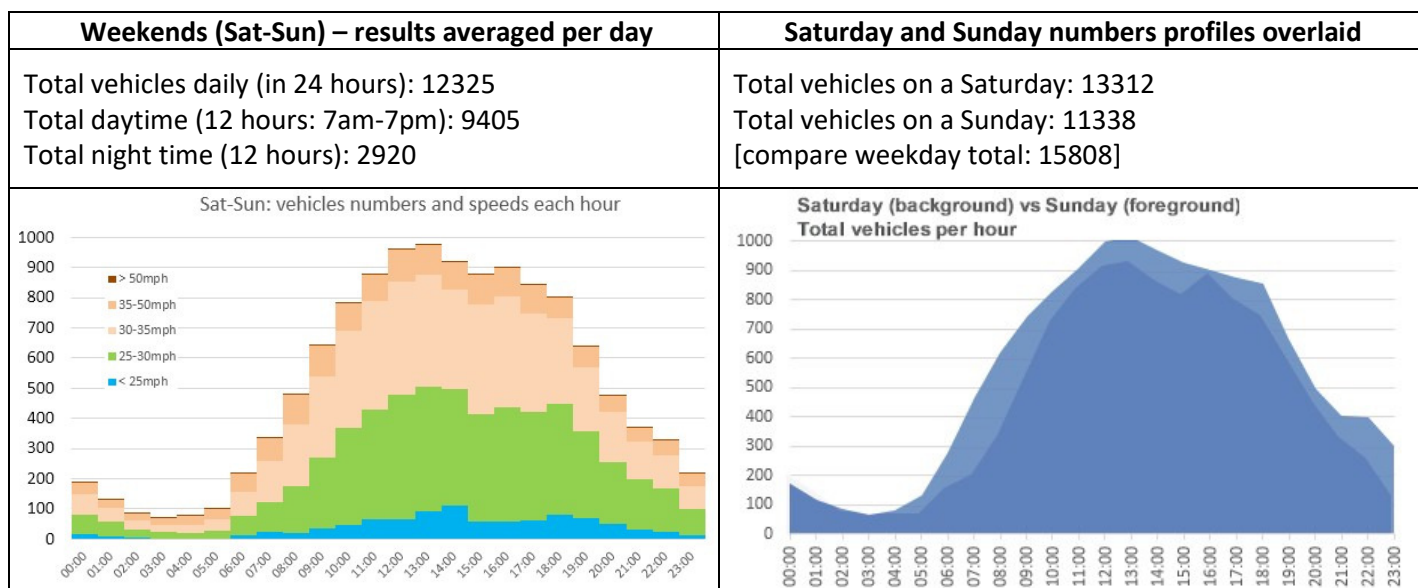


Trucks – numbers on weekdays, Saturday, and Sunday.



Saturday vs Sunday

Comparing the earlier weekend numbers picture with the overall profiles for vehicle numbers on Saturdays and Sundays separately (in blue), Saturday is busier especially between 6am and 10am but otherwise it seems that the distribution of vehicle numbers throughout the day is similar.



This summary of results was first made 26 March 2020; revised after 29 June discussion at FRPC meeting.